



**India Meteorological Department
(Ministry of Earth Sciences)**

HOURLY UPDATE ON VERY SEVERE CYCLONIC STORM 'YAAS'

BULLETIN NO. 13

DATE: 26-05-2021

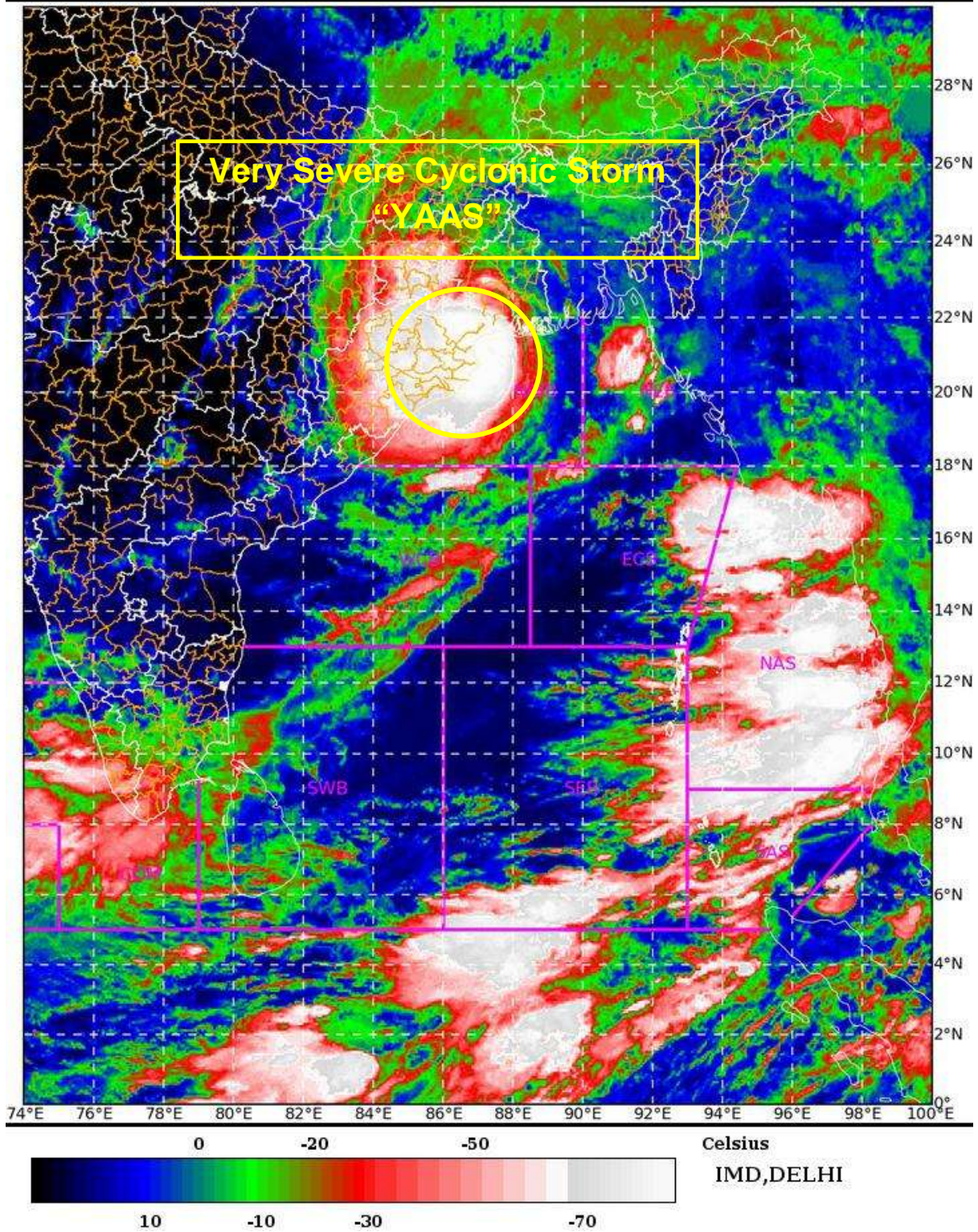
TIME OF ISSUE: 0915 HRS IST

| DATE/TIME (IST) OF OBSERVATION | BASED ON 26-05-2021 (0830 HRS IST) |
|---------------------------------------|--|
| LOCATION LATITUDE/LONGITUDE | THE VERY SEVERE CYCLONIC STORM 'YAAS' (PRONOUNCED AS 'YASS') LAY CENTRED AT 0830 HRS IST OF THE 26 TH MAY, 2021 OVER NORTHWEST BAY OF BENGAL NEAR LATITUDE 21.21°N AND LONGITUDE 87.1°E, ABOUT 45 KM NORTH-NORTHEAST OF DHAMRA , 60 KM SOUTHWEST OF DIGHA AND 40 KM SOUTH-SOUTHEAST OF BALASORE. |
| CURRENT INTENSITY NEAR CENTRE | 130-140 KMPH GUSTING TO 155 KMPH |
| PAST MOVEMENT | MOVED NORTH-NORTHWESTWARDS WITH A SPEED OF ABOUT 17 KMPH DURING PAST 06 HOURS. |
| FORECAST MOVEMENT AND INTENSITY | LANDFALL PROCESS HAS COMMENCED. THE SYSTEM WOULD CROSS NORTH ODISHA-WEST BENGAL COASTS TO THE SOUTH OF BALASORE WITHIN NEXT 03 HOURS AS A VERY SEVERE CYCLONIC STORM WITH WIND SPEED OF 130-140 KMPH GUSTING TO 155 KMPH. |
| FORECAST RAINFALL | ODISHA: LIGHT TO MODERATE RAINFALL AT MOST PLACES WITH HEAVY TO VERY HEAVY RAINS AT A FEW PLACES WITH EXTREMELY HEAVY FALLS AT ISOLATED PLACES IN JAGATSINGHPUR, KENDRAPARA, JAJPUR, BHADRAK, BALASORE, MAYURBHANJ, CUTTACK, DHENKANAL, KEONJHARGARH AND HEAVY FALLS AT ISOLATED PLACES IN PURI, KHURDA, ANGUL, DEOGARH, SUNDERGARH ON 26 TH MAY. WEST BENGAL: LIGHT TO MODERATE RAINFALL AT MOST PLACES WITH EXTREMELY HEAVY RAINFALL AT ISOLATED PLACES OVER MEDINIPUR AND HEAVY TO VERY HEAVY RAINFALL AT ISOLATED PLACES OVER JHARGRAM, BANKURA, SOUTH 24 PARGANAS AND HEAVY FALLS AT ISOLATED PLACES OVER PURULIA, NADIA, MURSHIDABAD, EAST BARDHAMAN, HOWRAH, HOOGHLY, KOLKATA, NORTH 24 PARGANAS, HALDIA, DARJEELING, KALIMPONG DISTRICTS ON 26 TH MAY.. JHARKHAND: LIGHT TO MODERATE RAINFALL AT MOST PLACES WITH HEAVY TO VERY HEAVY RAINFALL AND EXTREMELY HEAVY FALLS AT ISOLATED PLACES ON 26 TH & 27 TH MAY. |

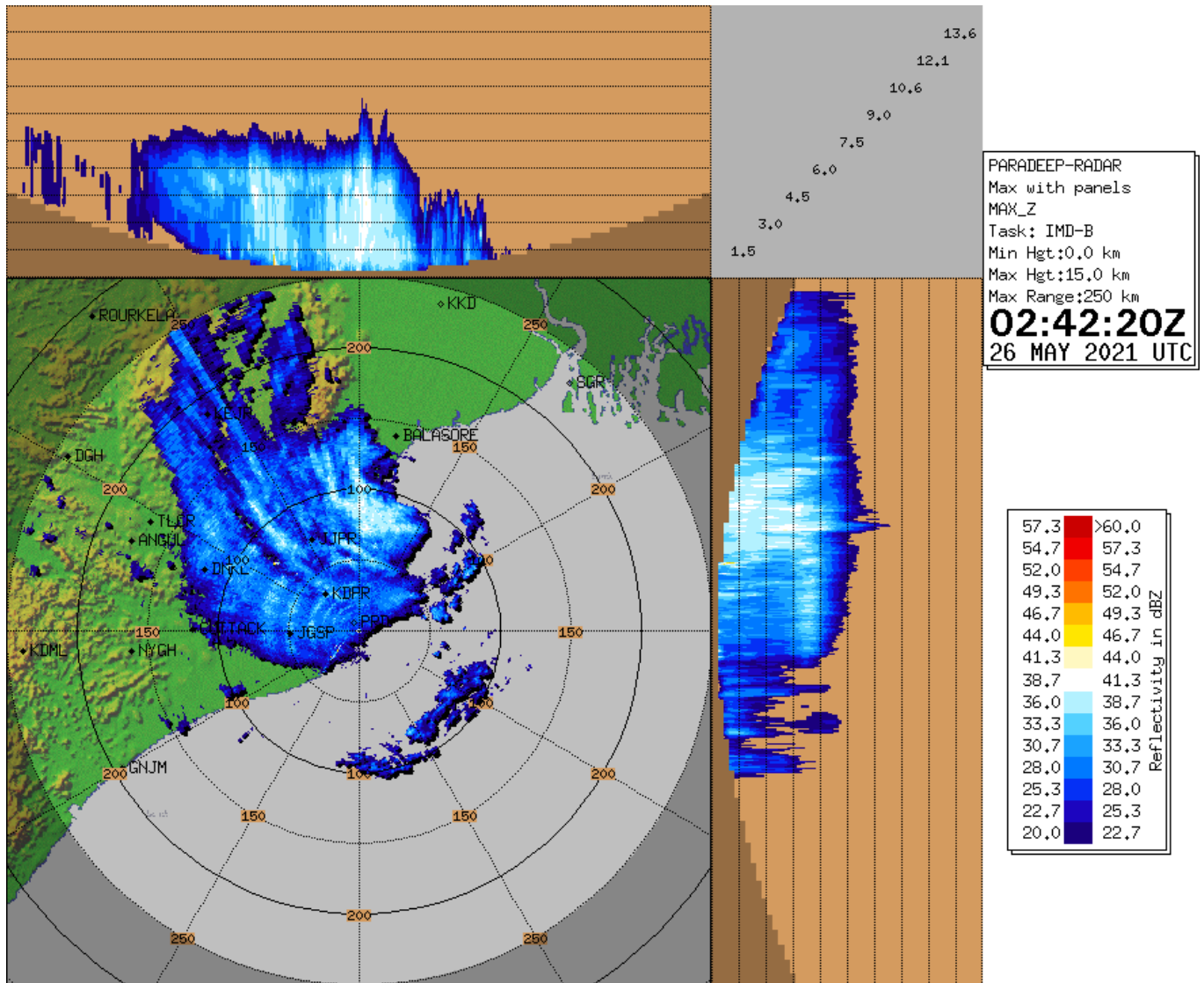
| | |
|---|--|
| <p>FORECAST WIND SPEED (KMPH) DURING LANDFALL</p> | <p>130-140 KMPH GUSTING TO 155 KMPH ALONG AND OFF BHADRAK AND BALASORE DISTRICTS AND 100-110 KMPH GUSTING TO 120 KMPH ALONG AND OFF KENDRAPARA DISTRICT AT THE TIME OF LANDFALL. WINDSPEED WILL DECREASE GRADUALLY AFTER LANDFALL BECOMING 65-75 KMPH GUSTING TO 85 KMPH BY EVENING.</p> |
| <p>FORECAST STORM SURGE</p> | <p>TIDAL WAVES OF HEIGHT 2-3 METERS ABOVE ASTRONOMICAL TIDE ARE LIKELY TO INUNDATE LOW LYING AREAS OF BALASORE, BHADRAK AND ABOUT 2 METERS ABOVE ASTRONOMICAL TIDE ARE LIKELY TO INUNDATE LOW LYING AREAS OF MEDINIPUR, SOUTH 24 PARGANAS, KENDRAPARA & JAGATSINGHPUR DISTRICTS AROUND THE TIME OF LANDFALL.</p> |
| <p>REALISED WEATHER</p> | <p>WIND REPORTED AT 0830 HOURS IST OF 26.05.2021 IN KMPH: 80-90 KMPH GUSTING TO 100 KMPH IS PREVAILING ALONG AND OFF NORTH ODISHA COAST. 70-80 KMPH GUSTING TO 90 KMPH IS PREVAILING ALONG AND OFF ADJOINING WEST BENGAL COAST. WINDS REPORTED IN KMPH: ODISHA: BALASORE-83, CHANDBALI-56., PARADIP- 44, BHUBANESHWAR-33 AND WEST BENGAL: - DIGHA- 44.</p> <p>RAINFALL IN CM (REPORTED DURING 0830 HOURS IST OF 25.05.2021 TO 0830 HOURS IST OF 26.05.2021):</p> <p>ODISHA:- BALASORE-6.5, CHANDABALI- 28.8, PARADIP-20.0, BHUBANESHWAR- 4.0 AND PURI-2.6 WEST BENGAL: DIGHA-5.5, DIAMOND HARBOUR-3.3 AND HALDIA-3.2.</p> |



L1C Mercator

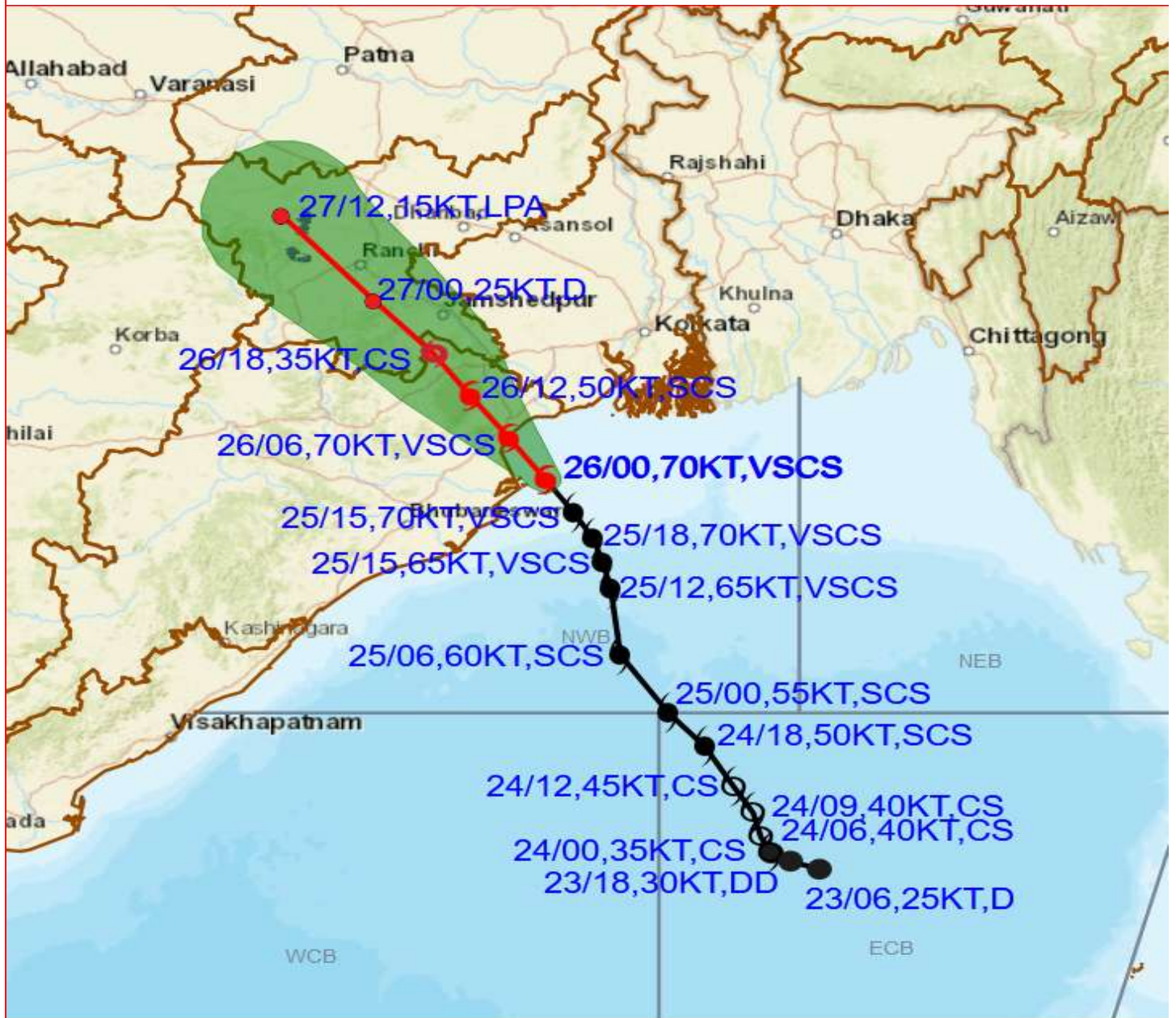


LATEST IMAGERY FROM DOPPLER WEATHER RADAR PARADIP





OBSERVED AND FORECAST TRACK ALONGWITH CONE OF UNCERTAINTY OF VERY SEVERE CYCLONIC STORM "YAAS" OVER NORTHWEST BAY OF BENGAL BASED ON 0000 UTC OF 26th MAY, 2021



DATE/TIME IN UTC

IST=UTC + 0530

L: LOW PRESSURE AREA

WML: WELL MARKED LOW PRESSURE AREA

D: DEPRESSION (17-27 KT)

DD: DEEP DEPRESSION (28-33 KT)

CS: CYCLONIC STORM (34-47 KT)

SCS: SEVERE CYCLONIC STORM (48-63KT)

VSCS: VERY SEVERE CYCLONIC STORM (64-89 KT)

ESCS: EXTREMELY SEVERE CYCLONIC STORM (90-119 KT)

SuCS: SUPER CYCLONIC STORM (\geq 120 KT)

● LESS THAN 34 KT

⊙ 34-47 KT

⊙ \geq 48 KT

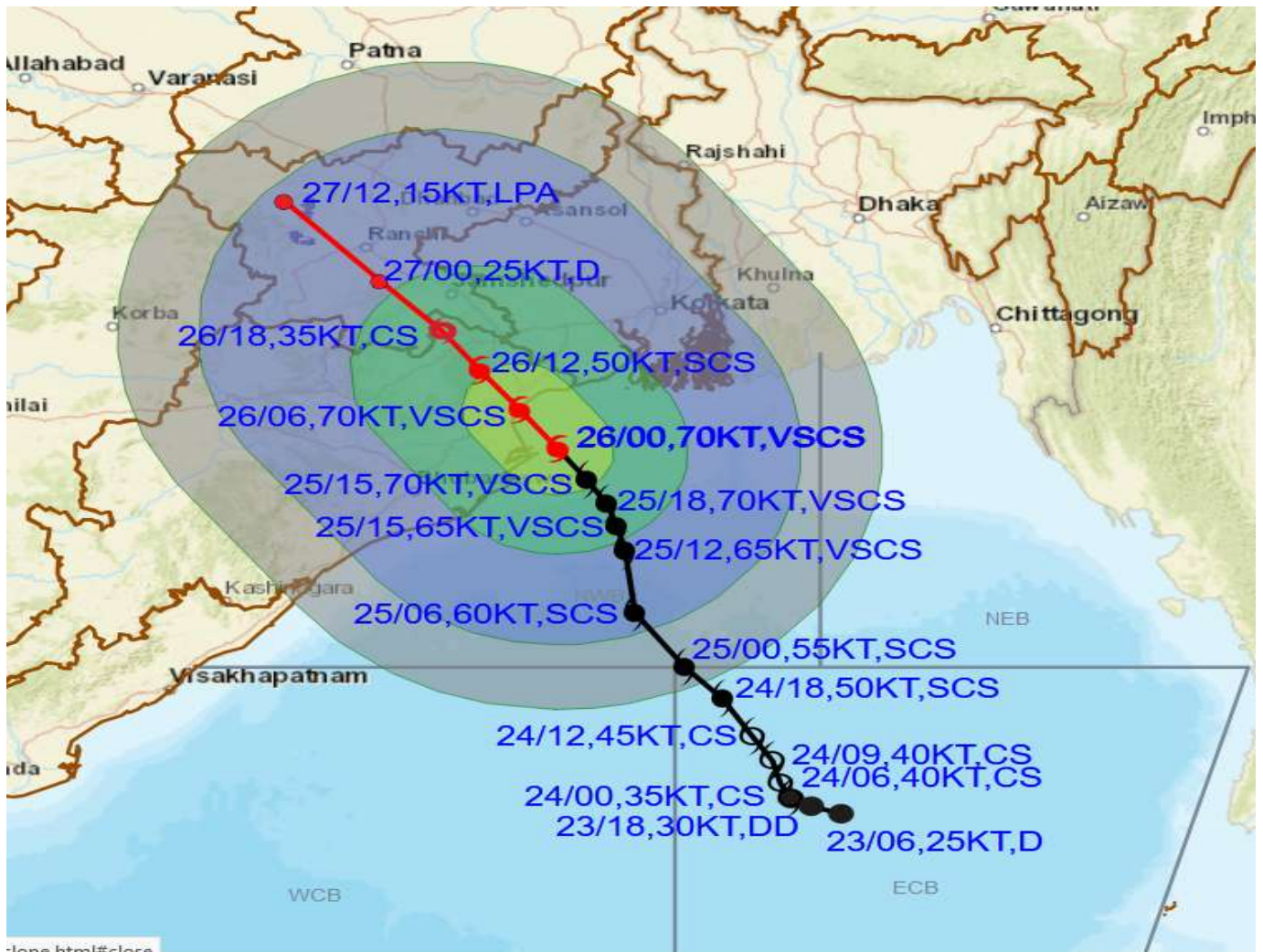
— OBSERVED TRACK

— FORECAST TRACK

▲ CONE OF UNCERTAINTY



OBSERVED AND FORECAST TRACK ALONGWITH QUADRANT WIND DISTRIBUTION OF VERY SEVERE CYCLONIC STORM "YAAS" OVER NORTHWEST BAY OF BENGAL BASED ON 0000 UTC OF 26th MAY,



DATE/TIME IN UTC
IST=UTC + 0530

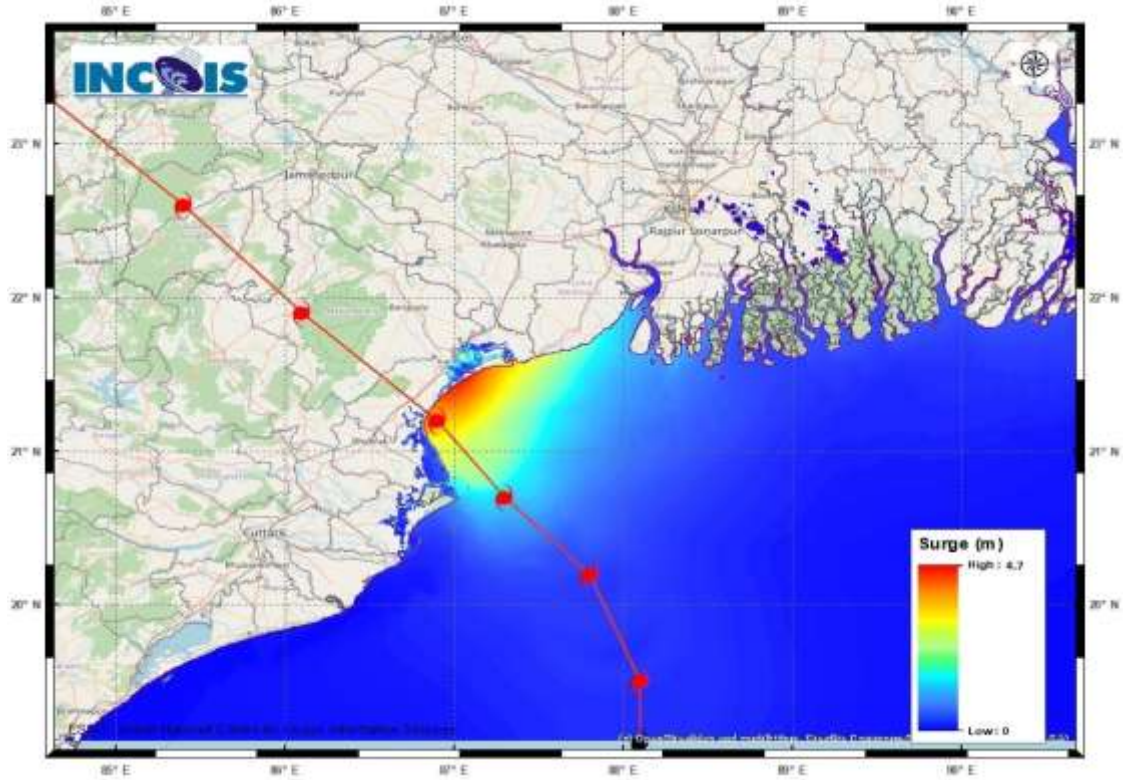
L: LOW PRESSURE AREA
WML: WELL MARKED LOW PRESSURE AREA
D: DEPRESSION (17-27 KT)
DD: DEEP DEPRESSION (28-33 KT)
CS: CYCLONIC STORM (34-47 KT)
SCS: SEVERE CYCLONIC STORM (48-63KT)
VSCS: VERY SEVERE CYCLONIC STORM (64-89 KT)
ESCS: EXTREMELY SEVERE CYCLONIC STORM (90-119 KT)
SuCS: SUPER CYCLONIC STORM (≥ 120 KT)

● LESS THAN 34 KT
○ 34-47 KT
● ≥ 48 KT
— OBSERVED TRACK
— FORECAST TRACK
● CONE OF UNCERTAINTY
AREA OF MAXIMUM SUSTAINED WIND SPEED:
■ 28-33 KT (52-61 KMPH)
■ 34-49 KT (62-91 KMPH)
■ 50-63 KT (92-117 KMPH)
■ ≥ 64 KT (≥118 KMPH)

IMPACT OVER THE SEA

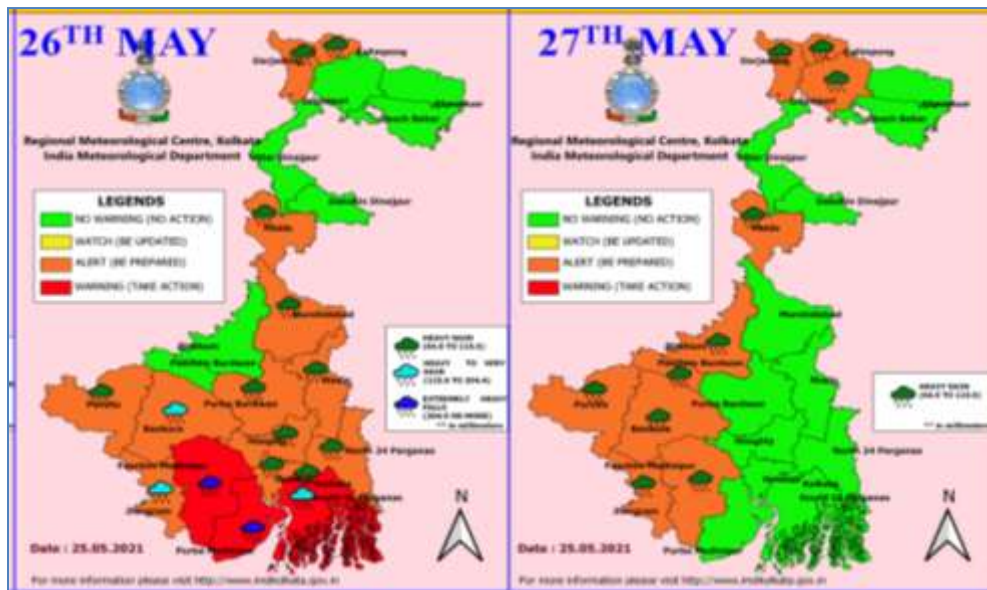
| MSW (knot/kmph) | Impact | Action |
|-----------------|------------------------|--|
| 28-33 (52-61) | Very rough seas | Total suspension of fishing operations |
| 34-49 (62-91) | High to very high seas | Total suspension of fishing operations |
| 50-63 (92-117) | Very high seas | Total suspension of fishing operations |
| ≥ 64 (≥118) | Phenomenal | Total suspension of fishing operations |

**STORM SURGE FORECAST AROUND THE TIME OF
LANDFALL:**

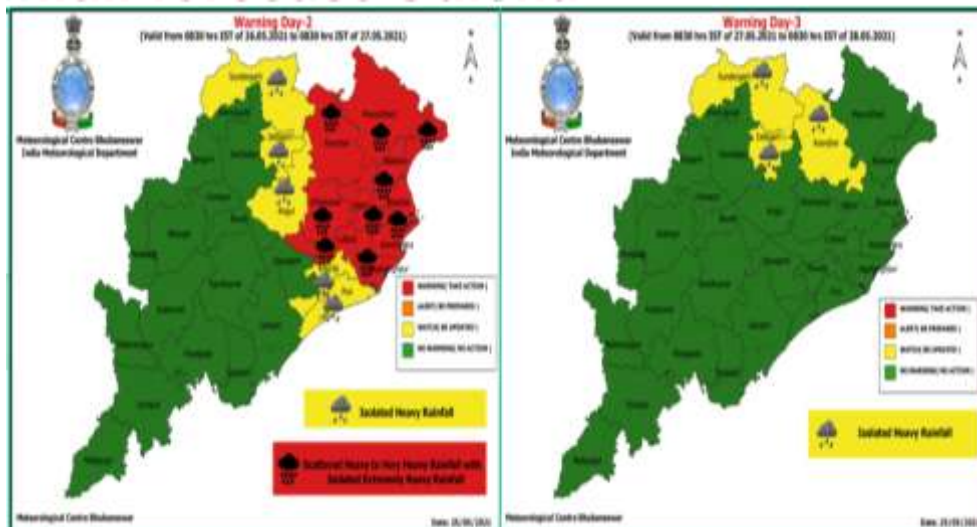


| MANDAL/TALUK | DISTRICT | STATE / UNION TERRITORY | NEAREST PLACE OF HABITATION | STORM SURGE (M) * | EXPECTED INUNDATION EXTENT (KM) |
|--------------------|----------------------|-------------------------------|-----------------------------------|----------------------------|--|
| BALESHWAR | BALESHWAR | ODISHA | KUMBHIRGARI | 2.2-4.7 | UPTO 3.53 |
| BHADRAK | BHADRAK | ODISHA | MOHANPUR | 1.5-3.9 | UPTO 9.00 |
| JAGATSINGHPUR | JAGATSINGHPUR | ODISHA | MUSADIA | 0.3-0.5 | UPTO 0.28 |
| KENDRAPARHA | KENDRAPARA | ODISHA | TIKAYAT NAGAR | 0.2-1.7 | UPTO 5.47 |
| KANTHI | PURBA MEDINIPUR | WEST BENGAL | SAFAR CHATA | 0.5-2.9 | UPTO 1.50 |
| DIAMOND HARBOUR | SOUTH 24 PARGANAS | WEST BENGAL | CHAKLOKNATH | 0.2-1.2 | UPTO 0.78 |
| BASIRHAT | NORTH 24 PARGANAS | WEST BENGAL | AMLAMETHI | 0.3-1.0 | UPTO 0.37 |
| TAMLUK | PURBA MEDINIPUR | WEST BENGAL | JAMITTA | 0.3-1.3 | UPTO 0.42 |
| ULUBERIYA | HAORA | WEST BENGAL | DENANCHAR ORPHULICHAR | 0.3-0.5 | UPTO 0.42 |

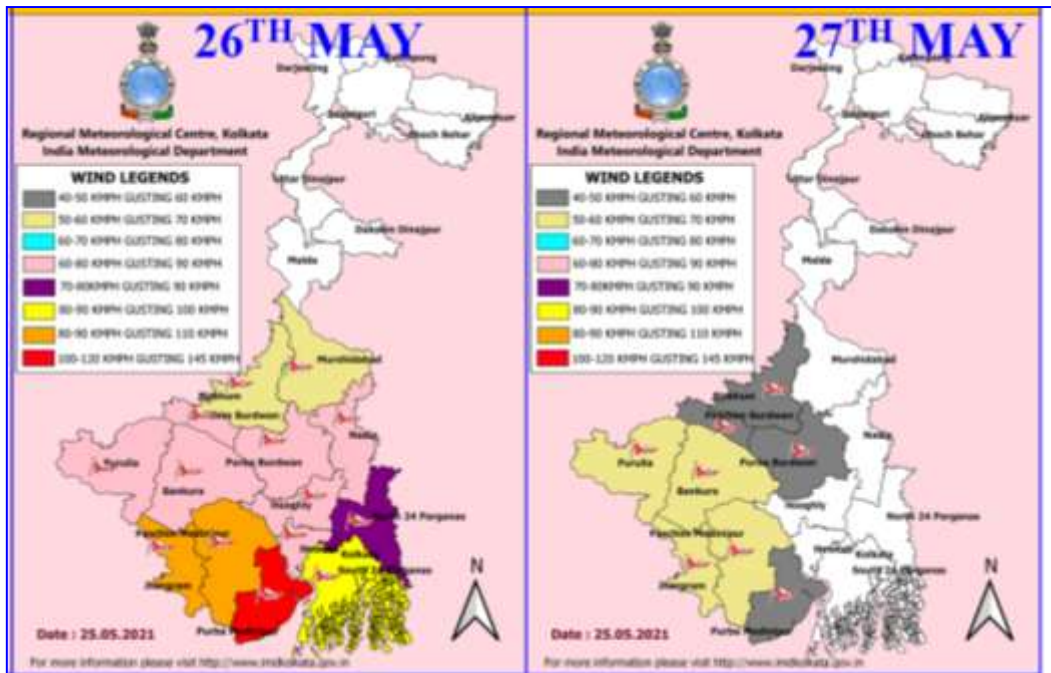
RAINFALL WARNING FOR WEST BENGAL



RAINFALL WARNING FOR ODISHA



WIND WARNING FOR WEST BENGAL



WIND WARNING FOR ODISHA

